

# The efficacy of a discontinuous graded exercise test in measuring peak oxygen uptake in children aged 8 to 10 years

**AUTHORS:** Lambrick D<sup>1</sup>, Jakeman J<sup>2</sup>, Grigg R<sup>3</sup>, Kaufmann S<sup>4</sup>, Faulkner J<sup>5</sup>

<sup>1</sup> Faculty of Health Sciences, University of Southampton, UK

<sup>2</sup> Department of Sport and Health Sciences, Oxford Brookes University, UK

<sup>3</sup> School of Sport and Exercise, Massey University, NZ

<sup>4</sup> Faculty of Philosophy II, Julius Maximilians University, Würzburg, 97074, Germany

<sup>5</sup> Department of Sport and Exercise, University of Winchester, UK

**ABSTRACT:** As children's natural activity patterns are highly intermittent in nature, and characterised by rapid changes from rest to vigorous physical activity, discontinuous exercise tests may be considered ecologically valid for this population group. This study compared the peak physiological responses from a discontinuous and continuous graded exercise test (GXT\_D, GXT\_C, respectively) during treadmill exercise in children. Twenty-one healthy children ( $9.6 \pm 0.6$  y) completed GXT\_D and GXT\_C in a randomised order, separated by 72-hours. Following each GXT, and after a 15-minute recovery, participants completed a verification test at 105% of the velocity attained at peak oxygen consumption ( $VO_{2peak}$ ). There were no differences in  $VO_{2peak}$  ( $55.3 \pm 8.2$  cf.  $54.4 \pm 7.6$  mL·kg<sup>-1</sup>·min<sup>-1</sup>) or maximal heart rate ( $202 \pm 10$  cf.  $204 \pm 8$  b·min<sup>-1</sup>) between GXT\_C and GXT\_D, respectively ( $P > .05$ ). Peak running speed ( $10.7 \pm 0.9$  cf.  $12.1 \pm 1.3$  km·h<sup>-1</sup>) and respiratory exchange ratio ( $1.04 \pm 0.05$  cf.  $0.92 \pm 0.05$ ) were however different between tests ( $P < .001$ ). Although similar peak physiological values were revealed between GXT\_C and the corresponding verification test ( $P > .05$ ),  $VO_{2peak}$  ( $53.3 \pm 7.3$  mL·kg<sup>-1</sup>·min<sup>-1</sup>) and heart rate ( $197 \pm 13$  b·min<sup>-1</sup>) were significantly lower in the GXT\_D verification test ( $P < .05$ ). In conclusion, a discontinuous GXT is an accurate measure of  $VO_{2peak}$  in children aged 8 to 10 years and may be a valid alternative to a continuous GXT, despite its longer duration.

**CITATION:** Lambrick D, Jakeman J, Grigg R, Kaufman S, Faulkner J. The efficacy of a discontinuous graded exercise test in measuring peak oxygen uptake in children aged 8 to 10 years. *Biol Sport*. 2017;34(1):57–61.

Received: 2016-02-01; Reviewed: 2016-10-06; Accepted: 2016-10-09; Published: 2016-12-01.

Corresponding author:

**Danielle Lambrick**  
Faculty of Health Sciences,  
University of Southampton, UK  
Tel: 02380 624932  
E-mail:  
D.M.Lambrick@soton.ac.uk

**Key words:**

$VO_{2peak}$   
Paediatric exercise  
Discontinuous exercise  
Continuous exercise

## INTRODUCTION

Maximal oxygen uptake ( $VO_{2max}$ ) denotes the highest rate of oxygen uptake and utilisation within the body, and is an important marker of aerobic fitness and endurance performance [1-3]. Although  $VO_{2max}$  testing is commonly undertaken with paediatric groups, there is no consensus as to which incremental protocol is the most accurate for use with pre-pubertal children [4-10].

Eston and Parfitt [11] suggest that a discontinuous, incremental exercise test may elicit a more appropriate indication of maximal functional capacity in children compared to a continuous exercise test. Although limited, the pilot data from the aforementioned study demonstrated a higher peak heart rate and a lower perception of exertion for a given heart rate during a discontinuous versus continuous exercise test. In addition, the discontinuous test was shown to be preferential. As children's natural activity patterns are highly intermittent in nature, and characterised by rapid changes from rest to vigorous physical activity, discontinuous exercise tests may be considered ecologically valid for this population group, possibly more

so than exercise of a continuous nature, if administered in the correct manner [12,13]. Skinner et al. [14] have previously demonstrated similar physiological responses between a continuous and discontinuous exercise test. However, during the discontinuous exercise protocol, the gradient of movement was altered rather than speed of movement, which does not necessarily demonstrate ecological validity [14]. Similarly, a prolonged rest period between bouts of intermittent exercise has been used in some studies, which may also limit the generalisability of study findings in relation to children's natural patterns of physical activity behaviour [14,15]. More recent research has tried to account for such differences by administering a discontinuous graded exercise test (GXT) protocol, which incorporates short recovery periods between bouts of increasing exercise [6,7,11,16]. For example, with pre-pubertal children, a number of studies have utilised repeated bouts of exercise (1-min duration) interspersed with passive recovery periods (1-min duration) [6,7,16]. However, a more comprehensive comparison of the physiological and perceptual re-

sponses between discontinuous and continuous testing procedures is needed to determine the validity of such protocols with children. Historically, the term  $\text{VO}_2\text{max}$  denotes a limit in  $\text{VO}_2$  despite increased muscular work [17], and is characterised by a plateau in  $\text{VO}_2$  in response to increasing exercise intensity [18]. However, it has often been shown that individuals can achieve their maximal aerobic capacity despite no observable plateau in their  $\text{VO}_2$  response (i.e.,  $\text{VO}_2\text{peak}$ ) [19–21]; a finding commonly associated with maximal exercise testing in children [5,22,23]. As the use of secondary criteria (i.e., achievement of a maximum heart rate within 10 b·min<sup>-1</sup> of age-predicted maximum) has also been questioned [2,24–26], a verification test, whereby an individual completes a supramaximal bout of exercise on completion of a maximal exercise test, has been recommended [19]. During continuous exercise testing, this ensures that an accurate  $\text{VO}_2\text{peak}$  has been attained in children [5]. However, as previous research has not yet implemented verification tests during discontinuous exercise testing procedures [6,7,16], further research is necessary to assess their efficacy following this type of exercise protocol.

The purpose of this study, therefore, was to compare the  $\text{VO}_2\text{peak}$  ascertained from a continuous and discontinuous exercise test in children aged 8 to 10 years. The study was also interested in identifying the importance of the verification test during both continuous and discontinuous exercise testing. It was hypothesised that a discontinuous GXT would elicit a higher  $\text{VO}_2\text{peak}$  than that achieved from a continuous GXT.

## MATERIALS AND METHODS

### Participants

Twenty-one healthy children ( $9.6 \pm 0.6$  y,  $1.47 \pm 0.09$  m,  $45.0 \pm 12.0$  kg,  $20.5 \pm 3.9$  kg·m<sup>2</sup>) who completed, on average, two bouts of structured physical exercise each week outside of the school environment, volunteered for this study. To ascertain that children were asymptomatic of illness, disease and pre-existing injuries, parents/guardians completed a health screening questionnaire. Child assent and parent/guardian consent were obtained prior to participation in the research, which was conducted in agreement with the guidelines and policies of the institutional ethics committee and the requirements stipulated by the Declaration of Helsinki.

### Procedures

Participants took part in two randomised laboratory-based exercise tests within a thermo-neutral environment ( $21.8 \pm 1.9$  °C,  $38.4 \pm 7.0$  % [humidity],  $1005 \pm 9$  Nm<sup>2</sup>); a discontinuous GXT (GXT\_D) and continuous GXT (GXT\_C) to  $\text{VO}_2\text{peak}$ . All tests were conducted in a randomised order on a treadmill (True 825, Fitness Technologies, St. Louis, USA) set at 1% grade to parallel the oxygen cost of running outside (Jones & Doust, 1996), with a minimum 72 h recovery period between tests. Standing and seated height (measured to the nearest 0.1 cm; SECA, Hamburg, Germany) and body mass (measured to the nearest 0.1 kg; InBody Biospace 230, Los Angeles, USA) were

obtained on the initial visit to the laboratory. The online respiratory gas analysis was undertaken continuously using a breath-by-breath automatic gas exchange system (Sensormedics Corporation, Yorba Linda, CA, USA). Respiratory variables (oxygen uptake [ $\text{VO}_2$ ], carbon dioxide [ $\text{VCO}_2$ ], minute ventilation [ $V_E$ ], respiratory exchange ratio [RER]) were measured continuously. Heart rate (HR) was measured using a paediatric wireless chest strap telemetry system (Polar Electro T31, Kempele, Finland), and stride frequency (SF) was recorded throughout each exercise test. The Eston-Parfitt (EP) Scale was used to provide an indication of a child's perception of exertion on completion of each stage of the exercise test [7]. All physical and physiological data were concealed from the participants during each test. At the end of the study children were asked to indicate (tick box) whether they preferred the discontinuous or continuous exercise test.

### Discontinuous graded exercise-test (GXT\_D)

Children were firstly familiarised and habituated to a range of treadmill speeds (4, 6 and 8 km·h<sup>-1</sup>) and testing equipment (facemask, HR monitor). The GXT\_D followed a discontinuous exercise protocol to ascertain  $\text{VO}_2\text{peak}$  and maximal heart rate (HR<sub>max</sub>) [7,16]. Children commenced the test by walking at 4 km·h<sup>-1</sup> for 1-min. The treadmill speed was then stopped (0 km·h<sup>-1</sup>) to allow a 1-min recovery before the treadmill speed was increased to 6 km·h<sup>-1</sup> for a further minute of exercise. Increments of 1 km·h<sup>-1</sup> continued with this protocol until a speed of 8 km·h<sup>-1</sup> was accomplished. Thereafter, the treadmill speed was incremented by 0.5 km·h<sup>-1</sup> (8.5, 9.0, 9.5, 10.0 km·h<sup>-1</sup>, etc.) every minute, with a 1-min recovery period between stages, until volitional exhaustion. During the final 10 s of each increment of the GXT, participants reported their overall perception of exertion.

### Verification test

Following a 15-minute recovery period, participants completed a  $\text{VO}_2\text{peak}$  verification test whereby speed was gradually increased over a 30 s period to a running speed which was 105 % of the velocity attained at  $\text{VO}_2\text{peak}$ . Participants then exercised at this running speed until volitional exhaustion. Physiological variables were measured throughout.

### Continuous graded exercise-test (GXT\_C)

The GXT\_C followed a similar protocol to that implemented in GXT\_D, except that no recovery periods were employed between each stage of the exercise test. A comparable verification test was utilised 15-minutes following GXT\_C.

### Data Analysis

A series of paired-samples *t*-tests were used to compare the maximal physiological ( $\text{VO}_2\text{peak}$ , HR<sub>max</sub>,  $V_{E\text{peak}}$ , terminal RER) and perceptual data between the GXTs. A similar analysis was used to compare  $\text{VO}_2\text{peak}$  data between the GXT and the respective verification stage for both GXT\_D and GXT\_C. Effect sizes were established using Cohen's *d*, where 0.2, 0.5 and 0.8 represent a small, moderate and

large effect, respectively [27]. Pearson's correlation coefficients (*r*) were used to quantify the similarity of the maximal physiological criteria between the two tests (GXT\_D and GXT\_C) and between each GXT and their respective verification data. A Bland and Altman 95% Limits of Agreement (LoA) analysis quantified the agreement (bias ± random error [1.96 x SD]) between the measured VO<sub>2</sub>peak from GXT\_D and GXT\_C [28]. Alpha was set at 0.05 throughout all analyses, and adjusted accordingly. All data were analysed using the statistical package SPSS for Windows, PC software, Version 21.

**RESULTS**

*GXT data*

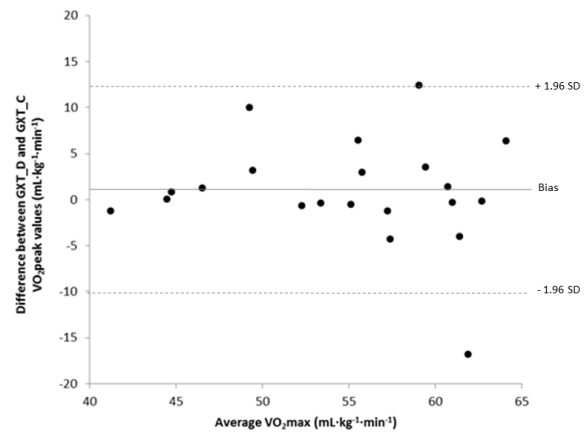
The maximal values reported on completion of GXT\_D and GXT\_C are shown in Table 1. Significant differences in RER and peak speed were observed between tests (*P* < .001). There were no differences between tests for VO<sub>2</sub>peak, HRmax, V<sub>E</sub>peak and perceived exertion (all *P* > .05).

Pearson's *r* from GXT\_D and GXT\_C revealed moderate to strong correlations for all values reported on completion of the tests (0.49-0.80; Table 1). For the VO<sub>2</sub>peak reported from the GXT\_D and GXT\_C, the corresponding 95% LoA were 0.91 ± 11.69 mL·kg<sup>-1</sup>·min<sup>-1</sup> (Figure 1). Representative data for VO<sub>2</sub> taken from one participant during GXT\_D and GXT\_C are shown in Figure 2.

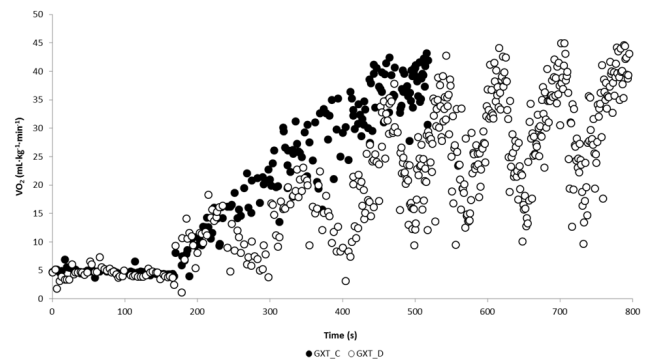
*Verification data*

Significant differences were observed for VO<sub>2</sub>peak (*P* < .05), HRmax (*P* < .01) and peak speed between GXT\_D and its corresponding verification test (*P* < .001). As demonstrated in Table 2, although participants were running at a significantly faster speed, a lower VO<sub>2</sub>peak and HRmax were reported during the verification test. A significant difference was only observed for RER between GXT\_C and the verification test, with a lower value reported during the veri-

fication test (*P* < .01; Table 3). Moderate to strong correlations were reported for all physiological, physical and perceptual responses between GXTs and their corresponding verification tests (GXT\_D: Table 2; GXT\_C: Table 3).



**FIG. 1.** Narrowest 95 % limits of agreement (bias ± [1.96 x SD<sub>diff</sub>], mL·kg<sup>-1</sup>·min<sup>-1</sup>) between the GXT\_D and GXT\_C VO<sub>2</sub>peak values.



**FIG. 2.** Representative subject data for VO<sub>2</sub> from GXT\_C (dark circles) and GXT\_D (open circles). The figure includes a 3-minute baseline VO<sub>2</sub> measure.

**TABLE 1.** Mean (± SD) physiological, perceptual and physical values on completion of GXT\_D and GXT\_C.

	GXT_C	GXT_D	r	Cohen's d
VO <sub>2</sub> peak (mL·kg <sup>-1</sup> ·min <sup>-1</sup> )	55.3 ± 8.2	54.4 ± 7.6	.64	.12
V <sub>E</sub> (L·min <sup>-1</sup> )	79.9 ± 22.8	77.6 ± 16.9	.49	.11
RER	1.04 ± 0.05	0.92 ± 0.05*	.68	2.49
HR (b·min <sup>-1</sup> )	202 ± 10	204 ± 8	.63	-.21
Perceived exertion	9.2 ± 1.3	9.9 ± 0.4	-.30	-.69
Peak speed (km·h <sup>-1</sup> )	10.7 ± 0.9	12.1 ± 1.3*	.80	-.14
Duration (min)	7.4 ± 1.6	21.5 ± 5.0*	.52	3.80

Note: GXT\_C - Continuous graded exercise-test; GXT\_D - Discontinuous graded exercise-test; r - Pearson's correlation coefficients; \* Significant difference between GXT\_D and GXT\_C (*P* < 0.05).

**TABLE 2.** Mean (± SD) physiological, physical and perceptual values on completion of the verification stage to GXT\_D.

	GXT_D_VER	GXT_D_DIFF	r	Cohen's d
VO <sub>2</sub> peak (mL·kg <sup>-1</sup> ·min <sup>-1</sup> )	53.3 ± 7.3	-1.2 ± 2.3*	.98	.14
V <sub>E</sub> (L·min <sup>-1</sup> )	76.1 ± 19.9	-2.5 ± 7.8	.95	-.18
RER	0.92 ± 0.11	0 ± 0.11	.37	0
HR (b·min <sup>-1</sup> )	197 ± 13	-7 ± 8*	.83	.64
Perceived exertion	9.6 ± 0.7	-0.2 ± 0.9	-.41	.52
Peak speed (km·h <sup>-1</sup> )	12.5 ± 1.2	0.5 ± 0.2*	.99	-.31
Duration (min)	1.2 ± 0.4			

Note: GXT\_D\_VER - the verification values from GXT\_D; GXT\_D\_DIFF - the difference in values between GXT\_D and the corresponding verification test; r - the Pearson's correlation coefficients; \* Significant difference between GXT and verification test (*P* < 0.05).

**TABLE 3.** Mean ( $\pm$  SD) physiological, physical and perceptual values on completion of the verification stage to GXT\_C.

	GXT_C_VER	GXT_C_DIFF	r	Cohen's d
$\dot{V}O_{2peak}$ ( $mL \cdot kg^{-1} \cdot min^{-1}$ )	55.3 $\pm$ 7.0	0.02 $\pm$ 4.4	.91	.0
$\dot{V}_E$ ( $L \cdot min^{-1}$ )	82.6 $\pm$ 17.4	2.7 $\pm$ 21.2	.62	-.13
RER	1.01 $\pm$ 0.05	0.03 $\pm$ 0.05*	.71	.20
HR ( $b \cdot min^{-1}$ )	204 $\pm$ 7	3 $\pm$ 9	.61	-.23
Perceived exertion	9.2 $\pm$ 1.3	0 $\pm$ 1.3	.66	.0
Peak speed ( $km \cdot h^{-1}$ )	10.7 $\pm$ 0.8	11.2 $\pm$ 0.8	1.00	-.55
Duration (min)	2.6 $\pm$ 1.1			

Note: GXT\_C\_VER - the verification values from GXT\_C; GXT\_C\_DIFF - the difference in values between GXT\_C and the corresponding verification test; r - the Pearson's correlation coefficients. \* Significant difference between GXT and verification test ( $P < 0.05$ ).

### GXT preference

Of the 21 participants, 19 participants indicated that they preferred GXT\_D compared to two participants who preferred GXT\_C.

## DISCUSSION

This study demonstrated no statistical differences in the  $VO_{2peak}$  values obtained from either a discontinuous or continuous GXT, in contrast to our study hypothesis which suggests that GXT\_D may elicit a higher measure of maximal functional capacity in pre-pubertal children. However, a significantly lower  $VO_{2peak}$  and HRmax were observed during the verification test of the discontinuous GXT. No differences were observed between the GXT and verification data from the continuous exercise test.

Continuous, incremental exercise testing protocols are commonly applied in paediatric research [5,8-10,29,30]. However, it has been suggested that continuous exercise testing protocols may limit athletic performance (i.e.,  $VO_{2peak}$ ) in individuals accustomed to intermittent exercise [31]. Past research has recommended that discontinuous GXTs may be appropriate when investigating the maximal exercise capacity of children [11] as it may better reflect children's normal patterns of physical activity [12,13]. In this study, a discontinuous GXT was shown to be a valid alternative to a continuous GXT when assessing maximal functional capacity in children aged 8 to 10 years, as shown by the statistical similarities and moderate to strong correlations (Table 1). However, it should be noted that the test duration of the discontinuous GXT was much greater than the continuous GXT, which would have practical implications associated with overheads, labour time and costs for clinicians and exercise practitioners.

In this study, 11 participants elicited a higher  $VO_{2peak}$  during the discontinuous GXT, while 10 participants elicited a higher  $VO_{2peak}$  during the continuous GXT. When considering the 95% LoA, a mean

difference of  $0.91 mL \cdot kg^{-1} \cdot min^{-1}$ , with a bias of  $\pm 11.69 mL \cdot kg^{-1} \cdot min^{-1}$ , was observed between the  $VO_{2max}$  values of the GXT\_D and GXT\_C (Figure 1). Accordingly, due to the large bias, one test (GXT\_D cf. GXT\_C) may underestimate  $VO_{2peak}$  by as much as 23 % compared to the other. It is of interest to note, however, that when the two outliers are removed from the analysis (Figure 1), the potential variance is reduced to 15 % (95% LoA:  $1.23 \pm 7.17 mL \cdot kg^{-1} \cdot min^{-1}$ ). As such, it is plausible that the inclusion of a more homogenous sample (e.g., matched for body mass, fitness) in a study such as this would likely reduce the observed differences in  $VO_{2peak}$  values between GXT\_D and GXT\_C. This should be considered in future research.

In keeping with previous research, a supramaximal bout of exercise (verification test) elicited statistically similar maximal values to those obtained from the GXT\_C [5,25]. Although eight of the participants (38 %) elicited a higher  $VO_{2peak}$  in the verification test of GXT\_C, only four participants (19 %) achieved a similar outcome for GXT\_D. In this regard, the verification test for GXT\_D elicited a significantly lower  $VO_{2peak}$  and maximal HR than that observed from the actual GXT, despite the observation of strong correlations ( $r = 0.98$  and  $0.83$ , respectively). As reflected in the duration of the GXT\_D verification test (Table 3), it is evident that the supramaximal bout of exercise that was employed was not appropriate for the children in this study. Essentially, the higher peak speed and longer test duration of GXT\_D compared to GXT\_C (Table 1) resulted in a subsequent validation test speed that was, practically, too quick for the children. Thus, the children were unable to achieve  $VO_{2peak}$  before volitional exhaustion ensued or the test needed to be terminated due to safety concerns (uncoordinated gait due to exhaustion). Accordingly, a verification test of this nature may not be appropriate following a discontinuous GXT, and alternative protocols, if deemed necessary, should be considered if implementing discontinuous exercise protocols to assess  $VO_{2peak}$  in children.

It is important to recognise that this study implemented established and robust measures for determining  $VO_{2peak}$  from the GXTs (i.e., verification test, secondary criteria). Although the utility of secondary criteria has been questioned [2,24-26], in the current study, there were minimal differences between the two testing procedures as similar maximal heart rates and peak perceptions of exertion were reported for GXT\_D and GXT\_C (Table 1). However, recovery periods during intermittent exercise have been shown to result in improved exercise performance as a result of the ability to resynthesise PCr and by ensuring the sufficient removal of metabolites,  $CO_2$  and the shuttling of blood lactate [32]. It is likely that such factors underpinned the achievement of a statistically higher peak speed and a lower RER on completion of the discontinuous GXT, as well as contributed to the children's preference with regards to the testing procedure (i.e., discontinuous vs. continuous GXT).

## CONCLUSIONS

In conclusion, a discontinuous GXT provides a valid measure of maximal functional capacity in comparison to a traditional continuous



GXT. Despite the large differences in test duration, a discontinuous GXT may elicit similar  $\text{VO}_2$  and heart rate responses, but higher peak speeds compared to a continuous test. Children also expressed preference for the discontinuous exercise protocol. A continuous protocol, however, would prove more time and cost efficient to administer. Although verification procedures have been recommended to confirm  $\text{VO}_2$  peak, our findings suggest that accurate measures of  $\text{VO}_2$  peak can be achieved through appropriate implementation of a single discontinuous or continuous GXT.

**Disclosure:** The authors have no financial interest or benefit associated with the application of this research.

**Acknowledgements:** None

**Funding and grant awarding bodies:** None

**Conflict of interests:** the authors declared no conflict of interests regarding the publication of this manuscript.

## REFERENCES

- Levine BD.  $\text{VO}_2$ max: what do we know, and what do we still need to know? *J Appl Physiol.* 2009;586: 25-34.
- Poole DC, Wilkerson DP, Jones AM. Validity of criteria for establishing maximal  $\text{O}_2$  uptake during ramp exercise tests. *Eur J Appl Physiol.* 2008;102:403-410.
- Wassermann K, Hansen JE, Sue DY, Stringer WW, Whipp BJ. *Principles of Exercise Testing and Interpretation.* 4th ed. Philadelphia: Lippincott Williams & Wilkins; 2005.
- Barker AR, Welsman JR, Fulford J, Welford D, Williams CA, Armstrong N. Muscle phosphocreatine and pulmonary oxygen uptake kinetics in children at the onset and offset of moderate intensity exercise. *Eur J Appl Physiol.* 2008;102:727-738.
- Barker AR, Williams CA, Jones AM, Armstrong N. Establishing maximal oxygen uptake in young people during a ramp cycle test to exhaustion. *Br J Sports Med.* 2011;45:498-503.
- Eston R, Lambrick D, Rowlands A. The perceptual response to exercise of progressively increasing intensity in children aged 7-8 years: Validation of a pictorial curvilinear ratings of perceived exertion scale. *Psychophysiol.* 2009;46:843-851.
- Lambrick D, Rowlands A, Eston R. The perceptual response to treadmill exercise using the Eston-Parfitt scale and marble dropping task, in children age 7 to 8 years. *Pediatr Exerc Sci.* 2011;23:36-48.
- Payne GV, Morrow JR. Exercise and  $\text{VO}_2$ max in children: a meta-analysis. *Res Q Exercise Sport.* 1993;64:305-313.
- Loftin M, Sothorn M, Warren B, Udall J. Comparison of  $\text{VO}_2$  peak during treadmill and cycle ergometry in severely overweight youth. *J Sports Sci Med.* 2004;3:254-260.
- Williams CA, Carter H, Jones AM, Doust JH. Oxygen uptake kinetics during treadmill running in boys and men. *J Appl Physiol.* 2001;90:1700-1706.
- Eston RG, Parfitt G. Perceived exertion. In: N Armstrong (Ed.). *Paediatric Exercise Physiology.* London: Elsevier; 2007. pp. 275-298.
- Bailey RC, Olson J, Pepper SL, Porszasz J, Barstow TJ, Cooper DM. The level and tempo of children's physical activities: an observational study. *Med Sci Sports Exerc.* 1995;27:1033-1041.
- Howe CA, Freedson PS, Feldman HA, Osganian SK. Energy Expenditure and Enjoyment of Common Children's Games in a Simulated Free-Play Environment. *J Pediatr.* 2010;157:936-942.e2.
- Skinner JS, Bar-Or O, Bergsteinova V, Bell CW, Royer D, Buskirk ER. Comparison of continuous and intermittent tests for determining maximal oxygen intake in children. *Acta Paediatr Scand.* 1971;S217: 24-28.
- Sheehan JM, Rowland TW, Burke EJ. A comparison of four treadmill protocols for determination of maximum oxygen uptake in 10-to 12-year-old boys. *Int J Sports Med.* 1987;8:31-34.
- Lambrick D, Faulkner J, Westrupp N, McNarry M. The influence of body weight on the pulmonary oxygen uptake kinetics in pre-pubertal children during moderate- and heavy intensity treadmill exercise. *Eur J Appl Physiol.* 2013;113:1947-1955.
- Hill AV, Lupton H. Muscular exercise, lactic acid, and the supply and utilization of oxygen. *Quart J Med.* 1923;16:135-171.
- Taylor HL, Buskirk E, Henschel A. Maximal oxygen intake as an objective measure of cardio-respiratory performance. *J Appl Physiol.* 1955;8:73-80.
- Day JR, Rossiter HB, Coats EM, Skasick A, Whipp BJ. The maximally attainable  $\text{VO}_2$  during exercise in humans: the peak versus maximum issue. *J Appl Physiol.* 2003;95:1901-1907.
- Morton RH. Why peak power is higher at the end of steeper ramps: an explanation based on the "critical power" concept. *J Sport Sci.* 2011;29:307-309.
- Sedgeman D, Dalleck L, Clark IE, Jamnick N, Pettitt RW. Analysis of Square-wave Bouts to Verify  $\text{VO}_2$ max. *Int J Sports Med.* 2013;34:1058-1062.
- Figuera-Colon R, Hunter GR, Mayo MS, Aldridge RA, Goran MI, Weinsier RL. Reliability of treadmill measures and criteria to determine  $\text{VO}_2$ max in prepubertal girls. *Med Sci Sports Exerc.* 1993;25:865-869.
- Rowland TW, Cunningham LN. Oxygen uptake plateau during maximal treadmill exercise in children. *Chest.* 1992;101:485-489.
- Kirkeberg JM, Dalleck LC, Kamphoff CS, Pettitt RW. Validity of 3 protocols for verifying  $\text{VO}_2$ max. *Int J Sports Med.* 2011;32:266-270.
- Midgley AW, McNaughton LR, Polman R, Marchant D. Criteria for determination of maximal oxygen uptake. *Sports Med.* 2007;37:1019-1028.
- Robben KE, Poole DC, Harms CA. Maximal oxygen uptake validation in children with expiratory flow limitation. *Pediatr Exerc Sci.* 2013;25:84-100.
- Cohen J. A power primer. *Psychologic Bull.* 1992;112:155-159.
- Bland JM, Altman DG. Statistical methods for assessing agreement between two methods of clinical measurement. *Lancet Neurol I.* 1986;307-310.
- Armstrong N, Williams J, Balding J, Gentle P, Kirby B. The peak oxygen uptake of British children with reference to age, sex and sexual maturity. *Eur J Appl Physiol.* 1991;62:369-375.
- Fawkner SG, Armstrong N, Potter CR, Welsman JR. Oxygen uptake kinetics in children and adults after the onset of moderate-intensity exercise. *J Sports Sci.* 2002;20(4):319-26.
- Mier CM, Alexander RP. Intermittent vs Continuous Graded Exercise Test for  $\text{VO}_2$ max in College Soccer Athletes. *Int J Exerc Sci.* 2011;4:Article 3.
- Dupont G, Moalla W, Guinhouya C, Ahmaidi S, Berthoin S. Passive versus active recovery during high-intensity intermittent exercises. *Med Sci Sports Exerc.* 2004;36:302-308.